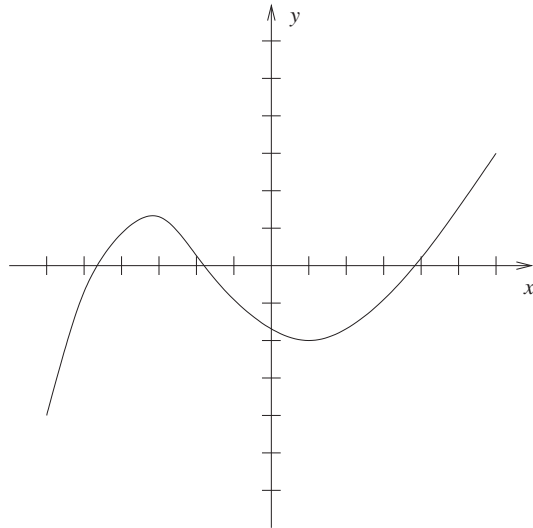
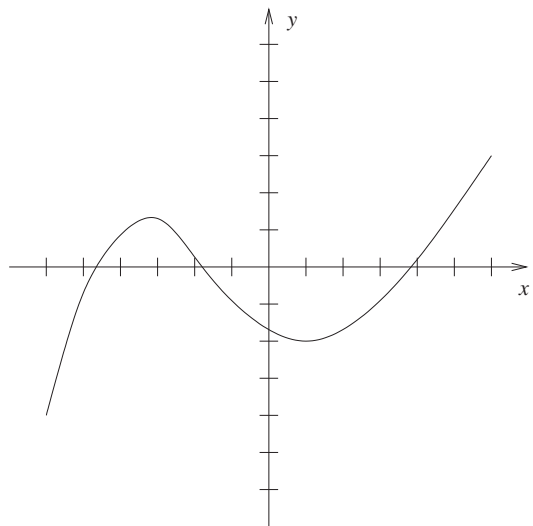


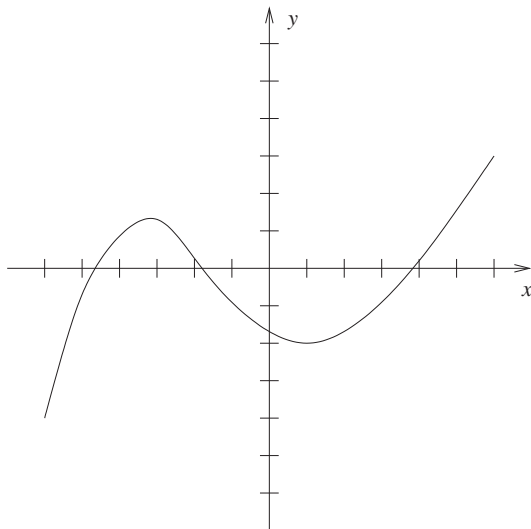
1. Below is a graph of function  $f$ . Using the same space, sketch the graph of  $g(x) = 2 \cdot f(x)$ .



2. Below is a graph of function  $f$ . Using the same space, sketch the graph of  $g(x) = -f(x)$ .



3. Below is a graph of function  $f$ . Using the same space, sketch the graph of  $g(x) = f(x-3) + 2$ .



4. Let  $h(x) = (x - 2)(x - 1)$ . Describe functions  $f$  and  $g$  such that  $h = (f + g)$ .

5. Let  $h(x) = x^2 - 3x + 2$ . Describe functions  $f$  and  $g$  such that  $h = (f \cdot g)$ .